

Annual Review 2022/23



First
Federation
Trust

Contents

- 2 Welcome from our Chair of Trustees
- 3 Chief Executive & Trust Lead's introduction
- 4 Our purpose, mission, vision and values
- 6 Our trust in numbers
- 8 How we work
- 10 Trust highlights
- 13 Interview with School Improvement Officer & English Lead, Claire Fegan
- 16 School highlights
- 26 Helping our environment
- 26 Who's who



Welcome from our Chair of Trustees

ALEX WALMSLEY



Welcome to our Annual Review 2022/23. I and my fellow trustees are delighted with the achievements of our family of schools during this past year and the manner in which they have lived up to our vision and values.

The board of trustees' role is to create a clear vision to help set the ethos and strategic direction of the trust and to challenge and hold to account leaders in terms of educational and financial performance. Our trust believes in working together to provide the best possible education for all and our vision is that everyone will aspire, flourish and achieve within the heart of their community. I am very proud to chair our trust and to work with such a committed team of trustees and governors, as well as with skilled leaders and staff across the trust and at all of our schools.

We have used our individual and collective strengths and experience over the past year to ensure continuing effective educational provision for our pupils. In terms of governance, we have benefitted from the input of skilled trustees and local hub board members including our parent representatives, as well as our other committees, to provide support across our schools and trust. This helps us to ensure that we use the specific insights of all trustees and committee members to support our performance and future improvement.

Trustees commissioned an external review our governance this year, conducted by the National Governance Association. The report

stated that governance is strong at every level within our trust. I am extremely grateful to our members, trustees, hub boards and all who support effective governance in our trust and schools.

Ofsted inspections in the past year have evidenced that our schools continue to achieve positive outcomes and our trust continues to grow and develop, for the benefit of all our schools and the wider communities we serve.

None of this could happen without our remarkable staff to whom we are truly grateful. One of the real strengths of our trust is the culture of partnership working and collaboration, both within our schools, and outside our trust with other educational colleagues and settings. We are proud to have supported our schools and others during this last year and we remain committed to working with schools who share a similar vision and ethos.

As a supportive and values-driven trust we welcome the opportunity to develop new partnerships and bring new schools into our trust family. We look forward to the challenges ahead and to continuing to provide the best possible education and life chances for all our pupils, working collaboratively and leading in best practice. I hope this Annual Review is helpful in showing the wonderful contribution of our schools over the past year.

Chief Executive & Trust Lead's introduction

PAUL WALKER



It's hard to believe another academic year is almost at an end. Over the last year, myriad wonderful things have been achieved in our schools. This review will go some way to share these achievements with you.

We started the year by celebrating a great set of summer outcomes, with our trust average results being better than the national averages. We are also delighted to see continued progress in our schools, with all of our schools still good or better in our Ofsted and SIAMS inspections.

Academic outcomes are only part of the story. Through this review you will also be able to read about the positive impact our schools have within their communities. This has included welcoming 40 Ukrainian pupils into our trust family; we've been delighted to get to know them and their families.

Our schools have continued to support local and national charity groups. In particular, several of our schools have been actively partnering with local food banks.

The cost of living crisis has affected many of us. Similar challenges are also affecting our school finances. There is national fall in the birth rate, and we are expecting there to be a third fewer primary-aged pupils in 2026 than there are now. This will have a profound impact on all primary school budgets, as schools are funded on a per-pupil basis. Our schools have also not been immune to the energy crisis and we are now paying 100% more for energy than this time last year.

This is the most challenging financial climate I have experienced in schools in my last 17 years of school leadership. Rising costs and increased pay are very hard to manage when the overall budgets are decreasing. As with any organisation, we can only spend what we have available.

There have been other challenges this year. The consequences of the pandemic are still present in our communities. We know the pandemic has impacted families in different ways and the next couple of years will reveal the full impact on the development of many pupils.

Since February we have had various days of industrial action. No teacher has taken the decision to strike lightly. However, all our staff are passionate about providing the best quality education for all and want to retain the excellence we constantly strive to deliver.

Over the year we have supported schools that are not members of our trust. We continue to be recognised as a strong and effective trust. As a result, we will be welcoming Charmouth Primary and Mary Dean's CE Primary to our trust next term.

I continue to be impressed with what our schools achieve on a daily basis. Dedicated staff, parents and carers, and the wider community come together to ensure we lay great foundations for our pupils' futures. Thank you for continuing to support our aims and those of our family of schools.

Our purpose

It's why we exist

Working together
to provide the best
possible education
for all

Our mission

It's what we do

Using our individual and collective
strengths to work together to
improve our schools. Providing all
pupils with the best education,
enabling them to succeed

Developing the individual
and growing positive
relationships

Our vision

It's what we'll achieve

Every individual will
aspire, flourish and
achieve within the heart
of their community

Contributing
positively to
all the
communities
we are a part
of

Inspiring
learning
for all

Aspire

Our
values

Flourish

Achieve



Staff appreciate the many opportunities for their own professional development provided by the multi-academy trust.

Chudleigh Knighton CE Primary School Ofsted inspection report

Our trust in numbers



19

member schools

3,380

pupils



129

pupils with education,
health & care plans

487

SEND support pupils



704

pupils eligible for the pupil premium grant



619

staff



27

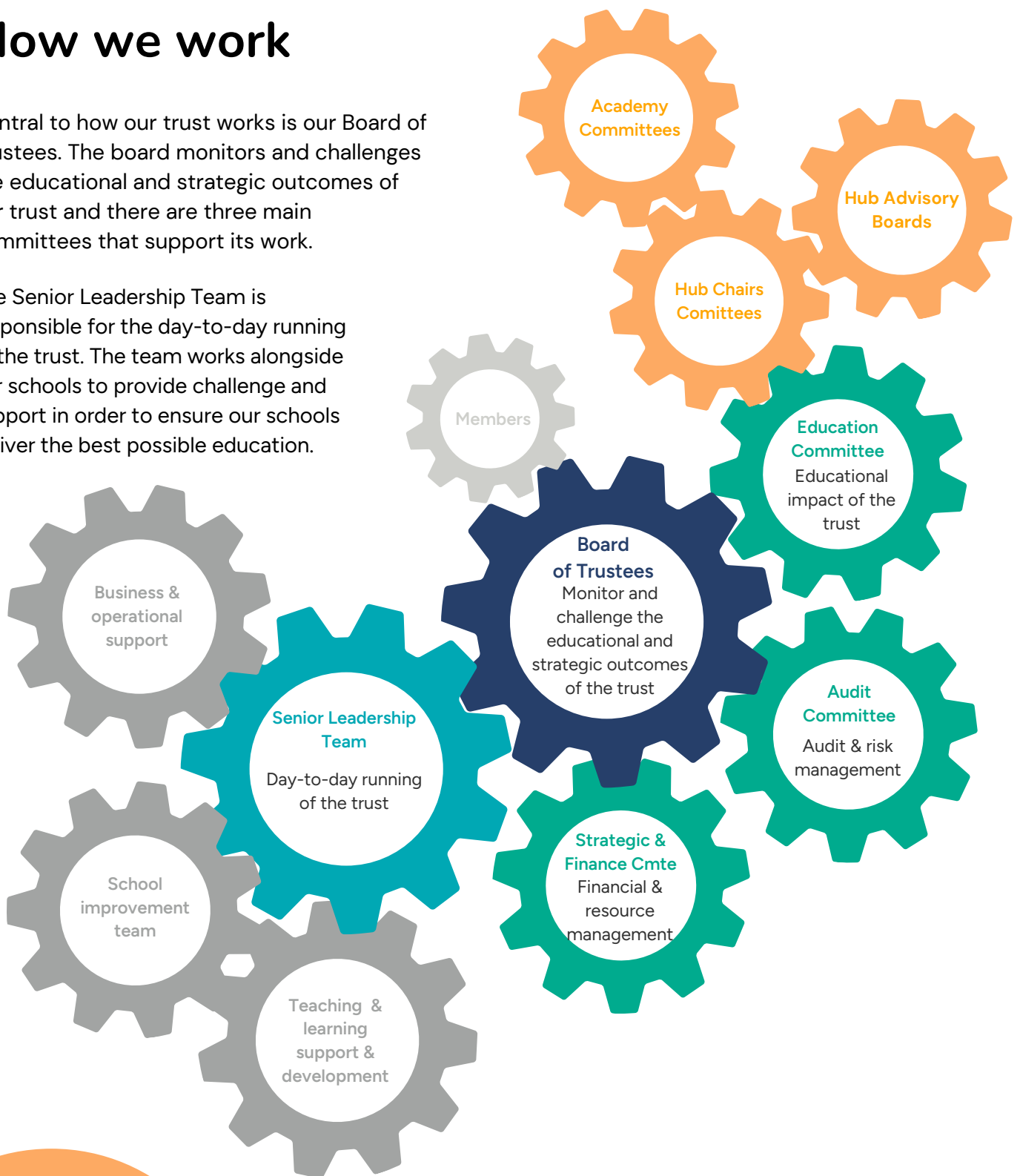
Trust Leaders of Education



How we work

Central to how our trust works is our Board of Trustees. The board monitors and challenges the educational and strategic outcomes of our trust and there are three main committees that support its work.

The Senior Leadership Team is responsible for the day-to-day running of the trust. The team works alongside our schools to provide challenge and support in order to ensure our schools deliver the best possible education.



Hub Advisory Boards

Our Hub Advisory Boards focus in detail on the quality of education in up to six schools. The boards have wider representation from parents and members of the school community.

Hub Chairs Committee

Ensures proactive discussion and debate between the hub boards and the education cttee.

Academy Committees

Support schools' work in their local communities.



“Governance is strong at every level in this trust; it has been carefully constructed, is effectively delivered by a small group of dedicated trustees and is well supported by the executive team and the governance professional.”

External Review of Governance, National Governance Association



Trust highlights this academic year

£83,947

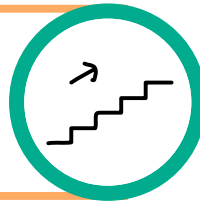
invested in staff development*



Three
trust schools supported through Ofsted inspections



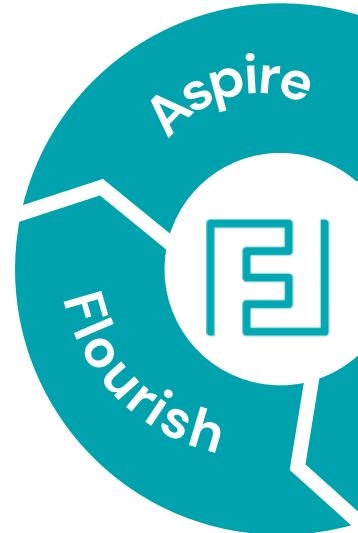
Two
external schools supported with improvement and leadership



One
Trust equality, diversity and inclusion conference



Two
new SEMH** learning bases






One
self-commissioned external
review of governance




Three
Thought leadership presentations
delivered at sector events



One
school improved to 'good'



208
staff trained to further develop
children's reading and writing



One
school supported through a SIAMS
inspection



Through well-considered and timely professional development, trust leaders support staff to develop appropriate knowledge of the subjects they teach and lead.

Lady Seaward's CE Primary School Ofsted inspection report



Interview with Claire Fegan, School Improvement Officer & English Lead

Collaboration is fundamental to the way we approach everything we do at First Federation Trust. Our model of working in partnership enables us to provide support and challenge to our schools, whether that's through our specialist networks such as those focussing on children's early years, their social, emotional and mental health (SEMH) or to support those children with special educational needs (SEN) for example. We also lead and facilitate collaboration across all subject areas, from maths and English to music and art.

English is an essential and wide-reaching subject that takes real priority in all of our schools. English subject leaders from each school meet each half term and benefit from training and support to continue to develop teaching and learning in reading, writing, speaking and listening. All teachers have the opportunity to work with others from different schools to look through examples of writing at different ages, moderate their assessments and share practice in phonics. The English curriculum is also a frequent focus for trust-wide professional development on non-pupil days and at staff meetings



Claire Fegan is one of our school improvement officers and also our English lead. We sat down with Claire to discuss some of the exciting projects and developments that have been happening within English since September. You can read the full conversation below.

Hi Claire! Shall we start with phonics? Can you tell us how we've supported our schools this year with their phonics teaching?

Teaching our youngest pupils to read and write is a top priority in all our schools. This year, Bere Alston and Mary Dean's have been working hard to introduce new phonics programmes through reception and Key Stage one, with some great results seen already.

For other schools, such as Hawkchurch and Lady Seaward's, the focus has been working on how phonics can best support older children who are struggling with reading or spelling with new support plans in place to help close gaps. Even in schools where the phonics approach is more established, schools look to keep fine-tuning to help all learners reach their potential. At Musbury and Chudleigh Knighton for example, reading leaders have been using a coaching approach to support all staff with their assessment and delivery of phonics.



You mention reading there, how do our children progress from mastering phonics to entering the wonderful world of reading confidently?

Once children have secured phonics, they begin to develop other aspects of reading. At some of our schools, building comprehension skills has been a particular focus. At St Budeaux and Whitchurch, teachers have adopted new planning for reading lessons to help develop fluency, vocabulary and inference. As well as learning the skills of reading, it is really important that we develop children's enjoyment and love of reading. Opportunities to meet and work with real-life authors at Portesham, the ever-popular Move & Choose at Willowbank and reading ambassadors sharing their book recommendations at Brixington, are all helping to spread the reading bug!

Writing has been a trust priority this year. The fantastic Vocabulary Ninja training was loved by our teaching colleagues. Can you tell us a bit about how this focus translates in terms of the teaching of writing in our schools?

Yes, our school teams talked very enthusiastically about the impact of the Vocabulary Ninja work! It's been great to see the children applying the words they've learnt in their writing and using their new vocabulary when answering questions in assemblies. Writing has been a trust-wide priority this year and has been central to many school's improvement plans. In some schools, particularly Colyton and Gatehouse, the focus has been on working through the writing process, thinking about how children plan, draft and edit their pieces. In other schools, such as Aveton Gifford and Sidmouth, teachers have worked on spelling strategies and how children can be supported to apply their earlier phonics knowledge to more complicated words. A new handwriting program at Westcliff has helped to ensure children practice letter formation and joining in a consistent way. For Blackpool and Salcombe there have been new approaches to supporting children with tricky concepts in sentence construction, grammar and punctuation.

“ Writing has been a trust-wide priority this year and has been central to many school's improvement plans. ”



A fundamental skill that good English teaching also supports is speaking and listening. Can you tell us a bit about how the trust seeks to develop these skills through teaching?

At First Federation Trust, we recognise that spoken language, or oracy, is really important for learning – and for life! After our non-pupil day with Vocabulary Ninja in January, lots of our schools have been looking at ‘Word of the Day’ and tackling some pretty ambitious language! Some of our schools, including Newton Ferrers and Rockbeare, have started working in partnership with Voice 21, the leading national organisation for developing children’s oracy skills.

“

... we recognise that spoken language, or oracy, is really important for learning - and for life!

”

That sounds amazing! Before we let you go, can you tell us a little bit about any exciting plans for next academic year?

We are looking forward to our first ‘Talk First’ event next year – where children from each school will be invited to make a speech about how their voice could change the world. We are also really excited about some development work with supporting our pupils in reception and year one with early writing, helping them to write successfully and independently, ready for the next stage. My goal is to organise a Festival of Literature for the trust, with children coming together across schools to work with authors and illustrators to help inspire their love of reading and writing. If we have any parents who are authors or illustrators, it would be fantastic for them to get in touch!

“

We are looking forward to our first ‘Talk First’ event next year – where children from each school will be invited to make a speech about how their voice could change the world.

”



School highlights by hub

Central hub



Chudleigh Knighton CE Primary School

2022/23 highlights

- No Outsiders project raising awareness of the importance of understanding and celebrating diversity and equality in society.
- Edukid charity initiative - fundraising for a Ugandan child's education.
- Mini Police road safety campaigns.
- Exeter University STEM ambassadors holding Lego problem solving workshops.
- Visits from Tesco to talk about food purchasing and sourcing linked to our trade routes topic.
- KS2 visit to a local house builder to explore career options in the construction industry.

Exciting plans for 2023/24

- Continued investment in our whole school reading promise to feature an enhanced range of rich and diverse books.
- Restoration and development of the school garden as an outdoor learning environment.
- Expanding our links with a wider range of community partners.

“Pupils contribute actively to the life of the school as members of the school council and ethos team. They are proud of their work in the community and in the wider world.”

Ofsted report



Lady Seaward's CE Primary School

2022/23 highlights

- Revamped our vision and values and our updated our curriculum in line with our school vision.
- Ukraine Day lead by our year six pupil from Ukraine and her classmates, where we celebrated the culture of Ukraine.
- Pupils sang and played their instruments at Devon County Show and at the Dart's Farm carol service.
- Our staff and pupils worked with Normal Magic, a service that supports pupils with their mental health. As a result, we have our 10-a-day to focus on, alongside our Mental Health Ambassadors.

Exciting plans for 2023/24

- Introducing our newly reworked curriculum.
- Developing our outdoor education so it includes more forest school activities and to open up the sessions to more classes.
- Developing the role of our Mental Health Ambassadors further.

“Leaders understand the importance of reading. They instil these values and good habits in children as soon as they start school in the Reception Year. Pupils read widely for pleasure.”

Ofsted report



Rockbeare CE Primary School

2022/23 highlights

- Delivered a new curriculum related to foundation subjects.
- Established an EYFS unit - getting the younger children off to a flying start.
- Relunched our core values, strongly linked to both learning and our Christian ethos.
- Broadened pupils' experience of their local community with several trips for each class that were further afield.
- Delivered a jam-packed calendar of events in our community eg performances, open classroom, fundraising events, etc.

Exciting plans for 2023/24

- Further establishing our newly introduced forest school curriculum across all classes, throughout the year.
- Continuing to tailor and enhance our wider curriculum offer to the needs of each child.
- Embarking on the next year of our new curriculum, establishing this rolling programme.

“ Nothing is ever a problem. They [staff] are very welcoming and approachable. You feel really part of something. ”

Parent



Westcliff Primary Academy

2022/23 highlights

- Raised over £3,000 for charities including Edukid, Children in Need and Comic Relief.
- Our year four football team won the Devon Schools Cup and we had a team first place finish in the Dawlish Learning Community cross-country event. Over half the school has taken part in extracurricular sport this year.
- Provided specialist music lessons in drums, guitar and piano. Pupils from across the school have performed at local music concerts and our summer fete.

Exciting plans for 2023/24

- Developing pupils' thinking using the Thinking Matters framework.
- Further developing the curriculum to include links to the wider community and 'awe and wonder' in pupils' learning.
- Supporting pupils SEMH needs with an approach to pastoral support and self-led intervention.

“ The care and attention my child has received has been nothing short of incredible. I am left completely stunned by not only her academic progress by also the pastoral care. ”

Parent



Willowbank Primary School

2022/23 highlights

- Ofsted graded the school as 'good' in all areas.
- Implemented the Willow Branch - an internal base to support pupils with SEMH needs.
- Continued to develop the Swap Shop - providing food, uniform, clothes, toys, etc.
- Working with local community initiatives eg Creative Cullompton on creative projects which are displayed in the local area.
- Implemented after-school club provision through Sports England to provide additional opportunities for vulnerable pupils within the community.
- A hugely successful Y3/4 trip to London.

Exciting plans for 2023/24

- Opening our newly built classroom space.
- Further developing a community fridge and shed.
- Implementing family coaching groups to build relationships across the school.
- Rolling out a revised and amended long-term plan for the wider curriculum.
- Implementing strategies for the teaching of retention and checking for understanding across all areas of the curriculum.

“ Pupils enjoy attending this welcoming and inclusive school. They describe the school as a fun place to be. ”

Ofsted report



East hub



Brixington Primary Academy

2022/23 highlights

- KS2 art project with Exmouth Council, inspiring designs for a plastic-eating sea snake.
- Our Mental Health Ambassadors attended a wellbeing fayre and led assemblies for mental health week.
- Our Reading Ambassadors and the choir have spent time with a local care home getting to know our community's older residents.
- 100 pupils took part in a Woodland Trust project to build a new forest in the local area.
- Dug up time capsules buried in 2000 and buried our own for future generations to find.
- £200 raised for Edukid in Uganda.

Exciting plans for 2023/24

- Redeveloping our outdoor area including our outdoor classroom.
- Year six sea safety lessons.
- School improvement focus on improving resilience and refining adaptive teaching for the benefit of all our learners.

Happy.



Friendly.



Most popular 'describe the school in one word' feedback from parents



Colyton Primary Academy

2022/23 highlights

- Young Leaders community projects (litter picks, Animal Trust, etc.).
- Careers curriculum well established.
- Development of metacognition in our curriculum and links with Thinking Matters.
- Development of our English and maths curriculum to include a greater focus on metacognition and oracy.
- Behaviour is good: our three core principles are well established and the children know them well. A relational approach is working successfully for all children.
- Mrs Mills and Mrs Evans presented at a national conference on the successful implementation of metacognition in our curriculum.

Exciting plans for 2023/24

- Vocabulary development through the foundation subjects.
- Developing Mental Health Champions and the school's approach to mental health.
- Further developing Habits of Mind to support the metacognitive approach to the curriculum.
- Young Duke of Edinburgh.



Staff are approachable and helpful, and the children feel well supported and engaged.



Parent



Hawkchurch CE Primary School

2022/23 highlights

- The PTA raised in incredible £7,000 towards new playground equipment for the school.
- Increased community involvement in the village eg 100 year anniversary, tree planting.
- Greater links with the church with Rev Sarah coming into school every week to take collective worship.
- 10 new children joining the school, some of whom start in September.
- Well attended community events eg quiz night and bingo.
- Growing our social media following and improving our online presence.

Exciting plans for 2023/24

- Investing in our outdoor area and forest school, made possible due to successful grant applications.
- Redeveloping the school grounds with a new semi-permanent cover for our outdoor classroom, a new garden area with polytunnel and a new pond area.
- Including outdoor education in the curriculum, delivered by our new forest school teacher.
- Launching gardening club.

“ No school or federation/trust has ever done more for my child. ”

Carer



Musbury Primary School

2022/23 highlights

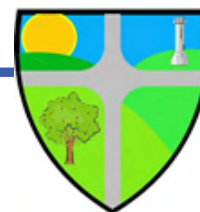
- Launched a new set of school values and elected members of our school council and ethos team.
- Installed new playground equipment, designed by the school and paid for by the PTFA.
- An increased focus on reading in both KS1 and KS2.
- Developing a playleader scheme for lunchtimes to support physical development in all children and leadership skills in KS2.
- Enhancing the curriculum through trips, visits and residential covering music, sport & culture.
- Held several successful community events.

Exciting plans for 2023/24

- Establishing a new rolling programme of carefully considered progressive curriculum.
- Redesigning the EYFS outside space.
- Developing our front garden, supported by a local business and designed by the children.
- Further investing in the school's reading books, giving fidelity to our phonic scheme and putting a focus on fluency.

“ School is very informative. It is helpful knowing what is being taught; we can support it at home. ”

Parents



Portesham CE Primary School

2022/23 highlights

- Completion of the wild flower meadow, which was funded by local residents whom the school had supported during the pandemic, with works undertaken by the Portesham Volunteer Group.
- Hosted our well-attended Christmas and Easter cafés for our families and the wider community.
- Y2 and Y3 enjoyed attending sports festivals hosted at Budmouth Secondary School.
- Seeing the children's coronation celebration art displayed in the village church.

Exciting plans for 2023/24

- Working with the children to create a more exciting outdoor space, to support lots of different types of playtime activity.
- Celebrating many aspects of the 2024 Paris Olympics, incl. learning about other cultures and countries. diversity and inclusion, and uniting to support our national competitors.

“My child has really enjoyed their DT learning - they are so proud of the skirt that they made and the new skills that they have acquired.”

Parent



Sidmouth CE Primary School

2022/23 highlights

- Successful SIAMs inspection where the school was graded 'good' overall and 'excellent' for collective worship.
- Our school netball team made it through multiple qualifier events to compete at the Devon finals.
- Redeveloped the forest school area at our Vicarage Road site.
- 66 children successfully completed Bikeability levels one and two.
- Held a community support event to address challenges faced in the community in conjunction with local charities.
- Three successful residential held across years four, five and six.

Exciting plans for 2023/24

- Taking part in the Mastering Number at KS2 maths project, as part of our work with the Jurassic Maths Hub.
- Continuing to develop and refine our approach to teaching writing.
- With significant support from the PTFA, renovating a large section of our playground.
- Redeveloping our nursery and EYFS outdoor spaces at our Vicarage Road site.

“Pupils are enthusiastic in working together, and are very articulate.”

SIAMs report, April 2023

South hub



Aveton Gifford CE Primary School

2022/23 highlights

- Fundraising events through the PTFA have helped purchase eight new iPads for our pupils.
- A donation from St Andrews church has paid for a new outdoor climbing frame to be used by all children.
- Our swim team placed 3rd in the South West regional schools trials held at Mount Kelly.
- Y4 pupils experienced a series of sailing lessons at Salcombe sailing club.
- Y6 children learnt how to surf.
- All children from Y2-Y6 have experienced a residential.

Exciting plans for 2023/24

- Further developing our personal development curriculum offer; giving all pupils a wide breadth of learning and extra-curricular opportunities.
- Further strengthening links with our local community.

Parents have commented on how grateful they are that the school offers a free after-school club.

Parents appreciate the residential school offer; whereby every child attends an overnight stay once a year.



Blackpool CE Primary School

2022/23 highlights

- Creating The Hive, a nurture space and learning base, to support pupils with social, emotional and mental health needs.
- Introduced our No Outsiders programme, focussing on diversity, inclusion and equality.
- Our eco committee achieved the Green Flag with Merit, leading many initiatives for environmental protection.
- Developed a sensory and wildlife garden thanks to funding from the PTA and developed our green spaces with the support of the gardening and eco clubs.
- Two very successful residential for Y4 & Y6 plus enrichment visits for other year groups.
- Extended pupil leadership responsibilities.

Exciting plans for 2023/24

- Further developing oracy as a key focus across the school by training a Voice 21 leader, as part of the Voice 21 project.
- Extending The Hive to support more pupils in the school.
- Continuing to find ways to fundraise to sponsor two pupils in Uganda to attend school through our Edukid partnership.



We really like the school's leadership philosophy around making sure that the children are always at the centre of things.



Parent



GATEHOUSE
Primary Academy

Gatehouse Primary Academy

2022/23 highlights

- Raised £4,622 for charity, incl. £3,406 for Children in Need and a joint initiative with Westcliff Primary, raising funds for Edukid.
- An EYFA pupil cut 17" off their hair for the Princes Trust and two staff members are swimming the channel to raise money for Mencap.
- Through Bikeability, over half the school have improved their road safety and cycling skills.
- A third of our children benefitted from in-school tutoring and mentoring.
- Y4 camping trip, Y5 sailing and a Y6 residential.
- Let Boys Dance and Let Girls Play Football.

Exciting plans for 2023/24

- All KS2 children participating in a residential.
- EYSF staff member trained in forest school supporting EYFS, our baby and toddler group and preschools in the local area.
- Working with Westcliff Primary and Dawlish College to create a citizenship programme for the town.

“The EYFS staff have been so supportive with our child and his additional needs. They have built such positive relationships and have really adapted the way they do things to meet his needs.”

Parent



Newton Ferrers CE Primary School

2022/23 highlights

- Mental health training delivered for all our pupils, alongside adult mental health first aider training. Positive touch and mindfulness sessions have been run across the school.
- Each year group has had the opportunity to perform a production during the year and performed to parents and members of the community.
- May Day, harvest festivals, summer fetes and church services have been well supported by families and the local community.
- Personal development curriculum set up across all age groups, further supporting the school's curriculum offer.

Exciting plans for 2023/24

- PTFA funding the development of our EYFS outdoor learning area and sensory playground.
- Implementing new writing and spelling approaches across the school.

I love school and phonics and playing with my friends.

Reception pupil

We learn about things all over the world and it makes we want to visit different places when I'm older.

Year four pupil



Salcombe CE Primary School

2022/23 highlights

- Together with the town council, hosted the Coronation Big Lunch, which took place at the school.
- To coincide with World Book Day, we wrote a book in collaboration with author James Hywel. The story, which features an adventurous mouse, is set in Salcombe and has now been published!
- Worked with Early Excellence to improve the continuous provision in our Early Years spaces.
- Worked with ocean charity Seaful to inspire, educate and empower our pupils and help them become mindful of the sea.

Exciting plans for 2023/24

- Relaunching Read Write to help our early readers and ensure that the phonics we deliver is done with confidence and fidelity.
- Working with the PTFA and the community to create a sensory garden.
- Collaborating with other small schools across the Southwest to improve the delivery and resourcing of our curriculum.



We are very proud to be part of the school and our little boy loves it and continues to blow us away with his knowledge and what he's been taught.



Parent



West hub



Bere Alston Primary Academy

2022/23 highlights

- Introduced forest school for all children.
- Introduced Class Dojo as a way of rewarding our children and connecting with our families.
- Made great use of social media to connect with our community like never before.
- In partnership with our Friends of School, we've introduced several new community and extra-curricular days.
- Revamped our approach to Maths Mastery.
- Renovated our outdoor areas thanks to the Maynard Trust and Bere Alston in Bloom.
- The children have taken part in myriad sporting events.

Exciting plans for 2023/24

- Beginning our reinvigorated wider curriculum in September.
- Creating a new space for reading that is special and bespoke for celebrating reading and books.
- Building our children's metacognitive skills as we start our journey as a Thinking School.
- Further developing the use of our outdoor space, building it into our curriculum.

“ The school has made some amazing changes this year. The community events have been a fantastic way of reconnecting with the community. ”

Parent



St. Budeaux Foundation CE Junior School

2022/23 highlights

- Creating our new EYFS learning environment, ready for welcoming our younger children in September 2023.
- Developing our library areas to encourage reading for pleasure.
- Hosting our extremely successful Siblings Stay & Play events.
- Fundraising across the year for charities incl. Children in Need, mental health charities and Comic Relief.
- Our Fiver Challenge run by the children, raised an amazing £1,000 - our highest total ever.
- Community celebrations incl. Mother's Day Cream Tea, Father's Day Breakfast and our Coronation street party were a huge success.

Exciting plans for 2023/24

- Becoming St. Budeaux CE Primary Academy.
- Developing our maths curriculum using Mastering Number and the National Centre of Excellence in the Teaching of Mathematics.
- Developing personal development and enrichment opportunities across the curriculum.
- Strengthening our community links by creating a community hub within the school.

“ I love our new library - the beanbags are really comfy and the new books are great! ”

Pupil



Whitchurch Community Primary School

2022/23 highlights

- Brilliant teamwork to further develop and embed the curriculum.
- Introduced Get Set 4 PE as a planning and assessment tool for PE.
- Inviting grandparents in for lunch with their grandchild/ren.
- Winning the cross-country tournament (Y3&4 and Y5&6), the netball tournament, rugby tournament and swimming gala.
- A successful bingo night organised by the PTA to raise money for the school.
- Our Bumblebee Club won the Tavistock Town spring window banner competition.

Exciting plans for 2023/24

- Applying for funding to improve and extend our Foundation outside area.
- Offer more lunches to the wider community.
- Continue to develop our partnership with the local preschool, involving them more in school events.
- Continuing to review and enhance our curriculum.

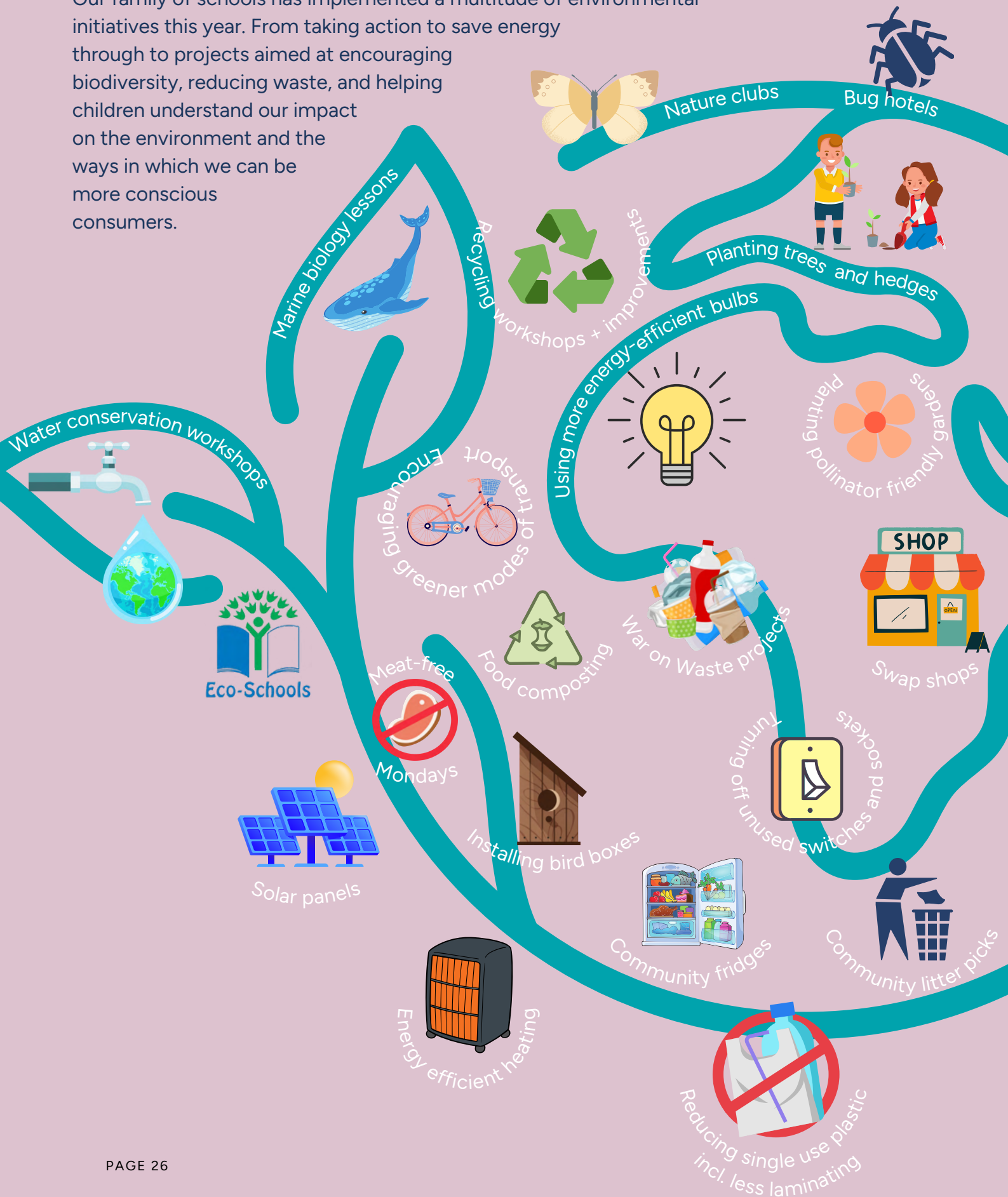
Thank you. It's our first sports day here and it is brilliant! We have had a brilliant afternoon. The DJ was very unexpected and it is very well organised.

Parent



Helping our environment

Our family of schools has implemented a multitude of environmental initiatives this year. From taking action to save energy through to projects aimed at encouraging biodiversity, reducing waste, and helping children understand our impact on the environment and the ways in which we can be more conscious consumers.



Who's who?

Board of Trustees

Alex Walmsley

Chair of the Board

- Strategic & Finance Cttee
- Education Cttee
- Audit Cttee

Ann Denner

Vice Chair

- Strategic & Finance Cttee
- Education Cttee
- Audit Cttee

Paul Walker

Chief Executive Officer

- Strategic & Finance Cttee
- Education Cttee

Andrea Gosling

Audit Committee Chair

- Strategic & Finance Cttee
- Education Cttee
- Audit Cttee

Rev Paul Wimesett

Lead Director for Christian Distinctiveness & Ethos

Carolyn Bromfield

Lead Director for SEN & Pupil Premium Pupils

- Education Cttee

Rachel Shaw

Lead Director for Safeguarding

Mike Williams

- Strategic & Finance Cttee
- Audit Cttee

Senior Leadership Team

- › Paul Walker - Chief Executive Officer and Trust Lead
- › Carol Chapman - Chief Operating and Finance Officer
- › Rachael Caunter - Director of School Improvement
- › Angela Jenkins - Director of Performance and Development
- › Isabelle Candy - Governance Officer
- › Sarah Cotton - Hub Business Manager
- › Cheryl Haddy - Hub Business Manager
- › Janine Price - Hub Business Manager
- › Alex Bremner - Hub Business Manager
- › Liz Dymond - Hub Business Manager
- › Sarah Gillies - Head of Marketing and Communications
- › Jay Presneill - ICT Manager



First Federation Trust
Blackpool CE Primary School
Liverton
Newton Abbot TQ12 6JB
01626 244920
admin@firstfederation.org.uk
www.firstfederation.org

